



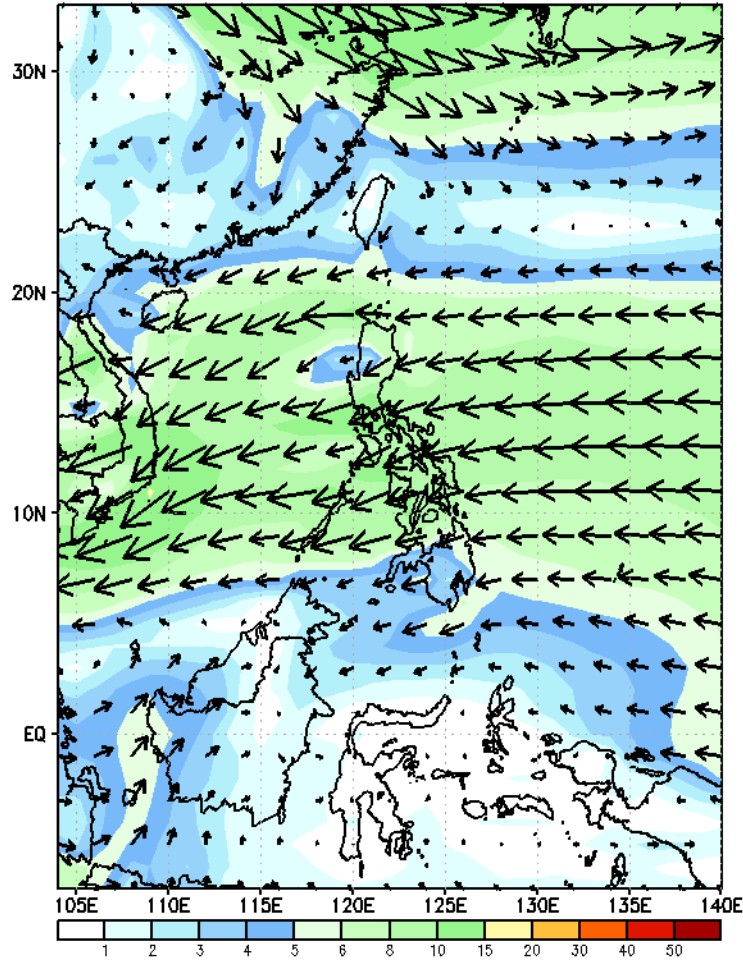
# Week 1 & Week 2 Forecast for the Philippines using GEFS Model



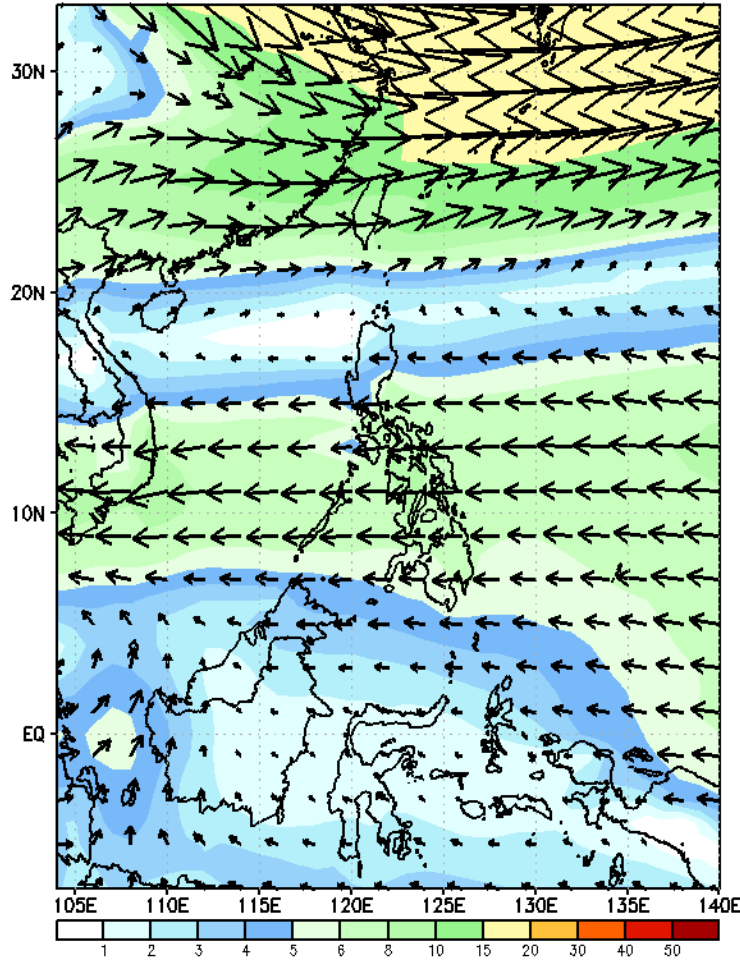
# GEFS Week-1 Wind Forecasts:

Week 1: Nov 25- Dec 01, 2024

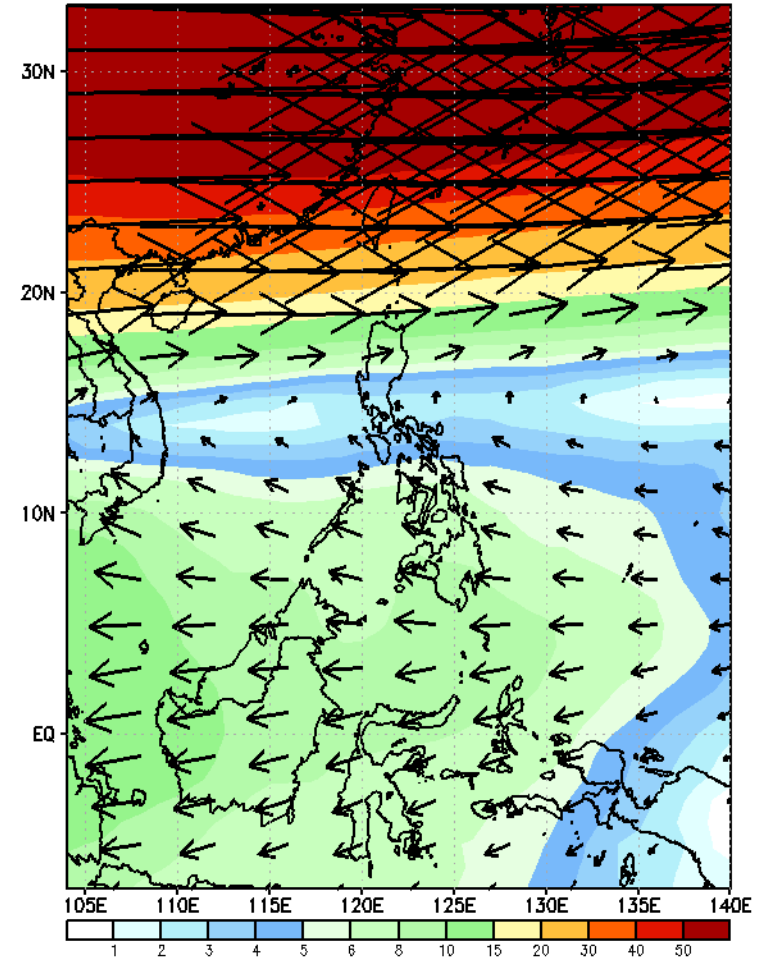
GEFS Week-1 850-hPa Wind Total  
Valid: 20241125 - 20241201



GEFS Week-1 700-hPa Wind Total  
Valid: 20241125 - 20241201

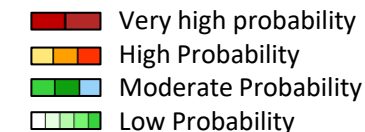


GEFS Week-1 200-hPa Wind Total  
Valid: 20241125 - 20241201



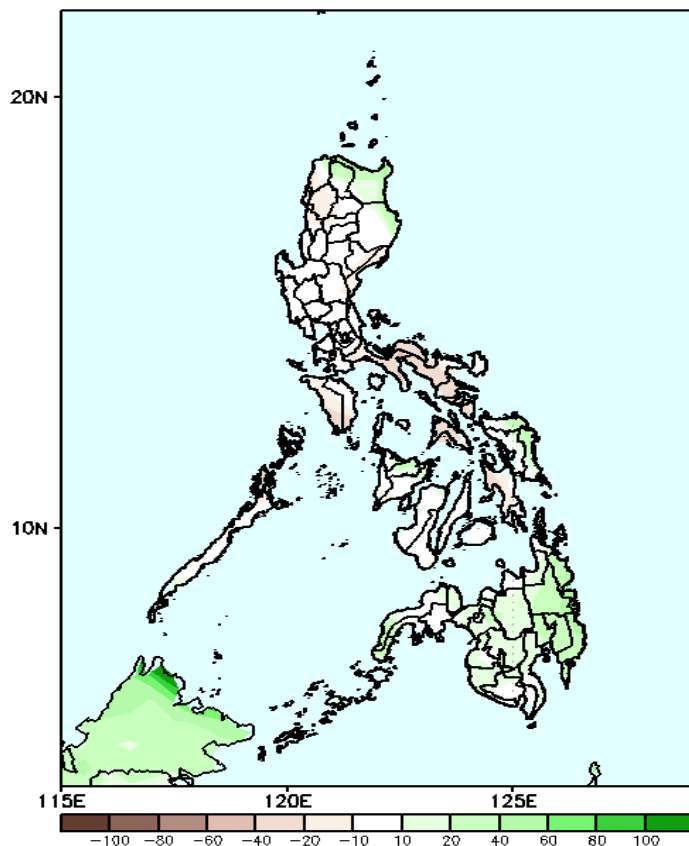
Northeast Monsoon affecting Extreme Northern Luzon, Easterlies will likely affect the rest of the country during the forecast period

# Precipitation Anomaly and Exceedance Probability > 25/50 mm



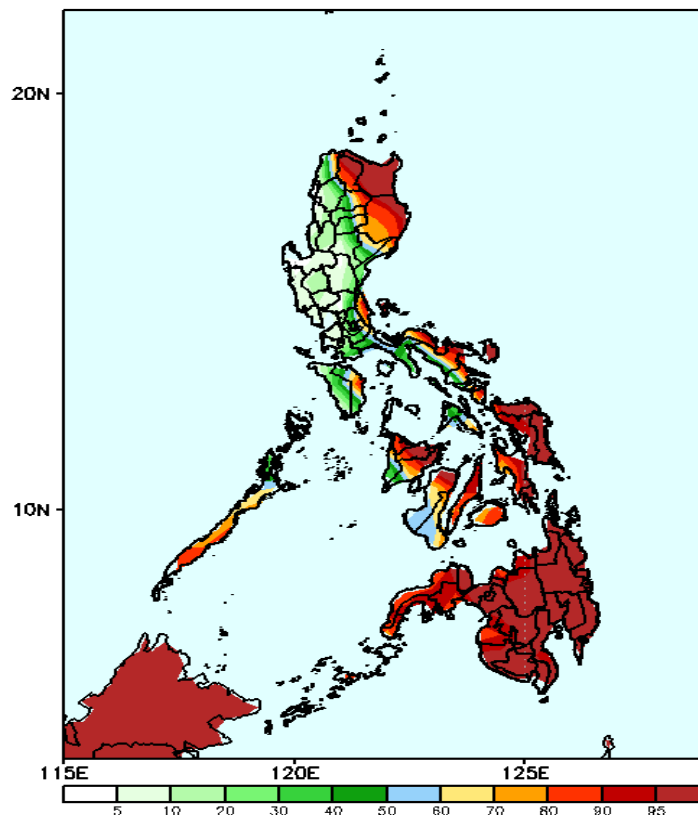
Week 1: Nov 25- Dec 01, 2024

GEFS Week-1 Precip Anomaly  
Valid: 20241125 - 20241201



Increase of rainfall of 10-60mm is most likely in Apayao, Cagayan, eastern part of Isabela, Northern & Eastern Samar, Capiz, and most parts of Mindanao while 10-30mm rainfall deficit is expected in Mindoro, Quezon, and Bicol Region.

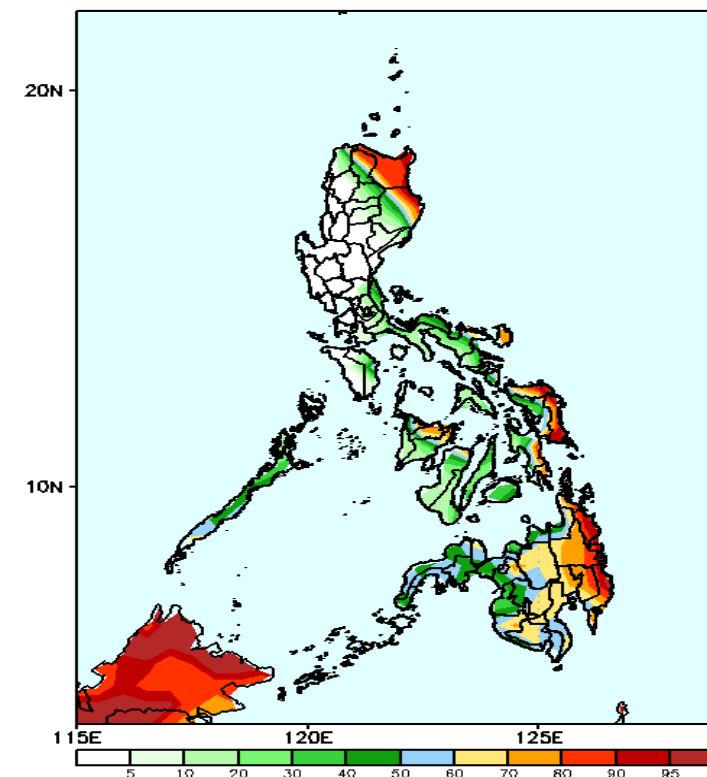
GEFS Week-1 Exceedance Prob. > 25mm  
Valid: 20241125 - 20241201



## Probability to Exceed 25mm

- High to very high over Apayao, Cagayan, Isabela, eastern parts of Kalinga, Aurora, Palawan, Bicol Region, most parts of Visayas and Mindanao;
- Moderate to high over Ilocos Norte, CAR, Mindoro, and the rest of southern Luzon,
- Low to moderate over the rest of Luzon.

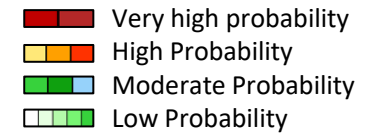
GEFS Week-1 Exceedance Prob. > 50mm  
Valid: 20241125 - 20241201



## Probability to Exceed 50mm

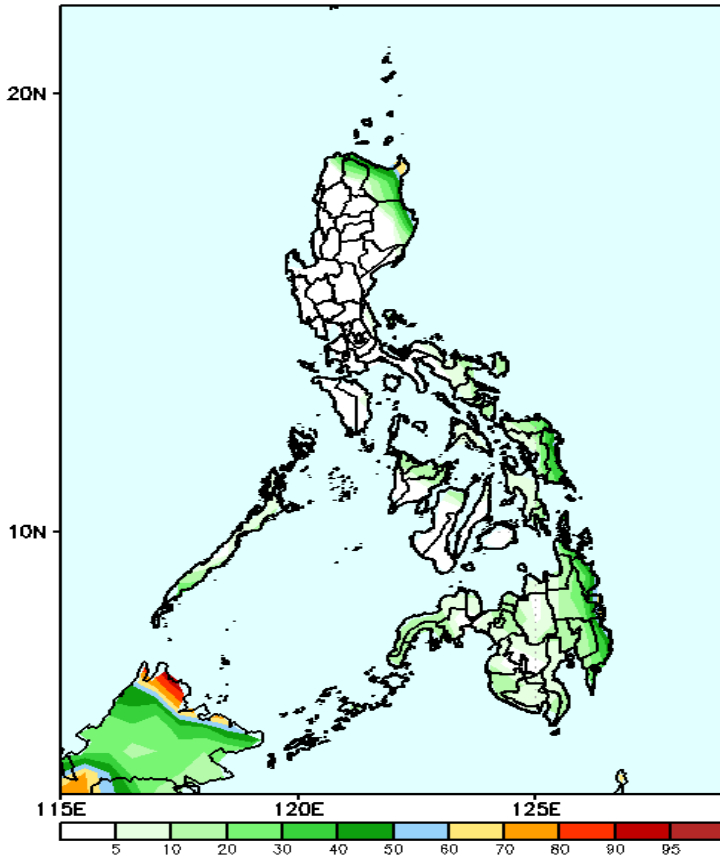
- High to very high over Extreme Northern Luzon, Northern and Eastern Samar, Surigao del Sur and northern part of Davao Oriental;
- Moderate to high over the northern part of Apayao, Cagayan, northern tip of Ilocos Norte, northeastern part of Isabela, eastern section of Bicol Region, Aklan, Capiz, Southern Leyte and the rest of Mindanao;
- Low to moderate over the rest of Southern Luzon and Visayas;
- Low over the rest of Luzon.

# Exceedance Probability > 100/150/200 mm

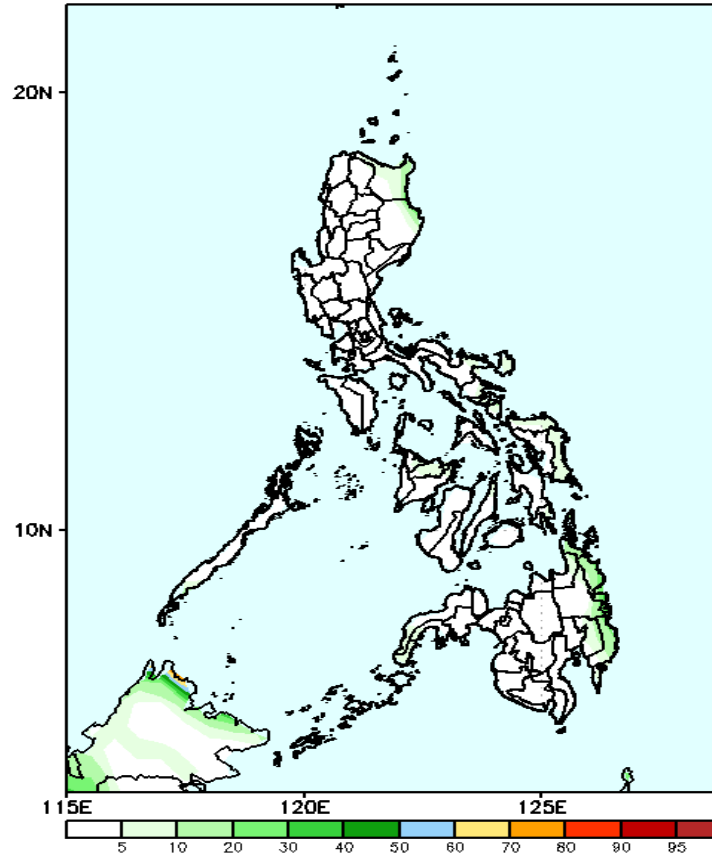


## Week 1: Nov 25- Dec 01, 2024

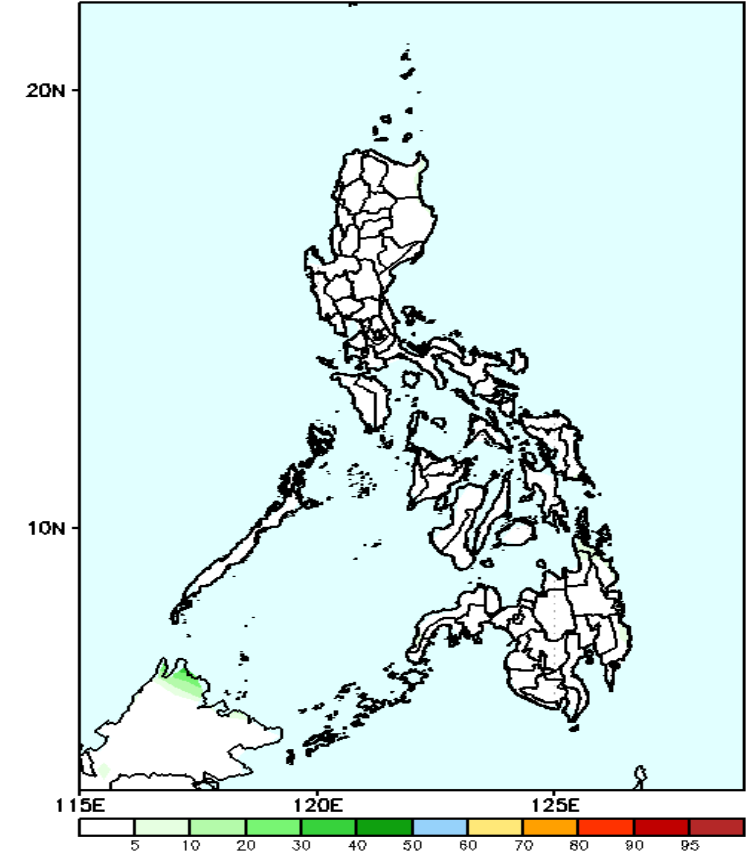
GEFS Week-1 Exceedance Prob. > 100mm  
Valid: 20241125 - 20241201



GEFS Week-1 Exceedance Prob. > 150mm  
Valid: 20241125 - 20241201



GEFS Week-1 Exceedance Prob. > 200mm  
Valid: 20241125 - 20241201



- Moderate to high over Extreme Northern Luzon, the northern tip of Cagayan and the southern part Surigao del Sur;
- Low to moderate over Eastern Visayas and the rest of Eastern Mindanao.
- Low over the rest of the country.

### Probability to Exceed 150mm

- Low across the country.

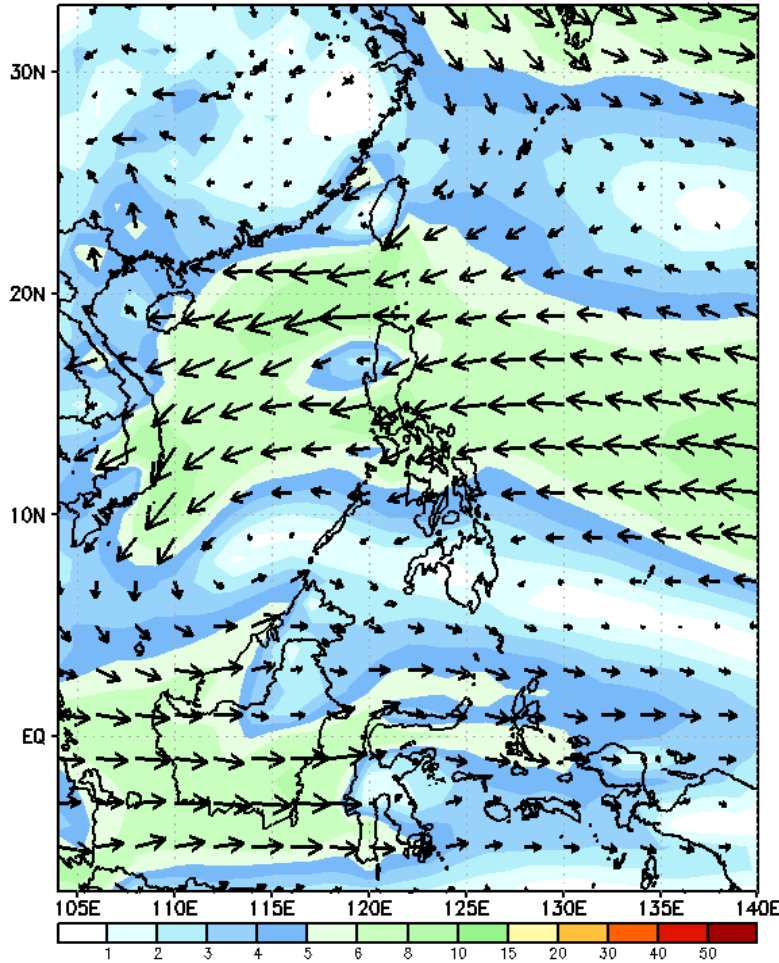
### Probability to Exceed 200mm

- Low across the country.

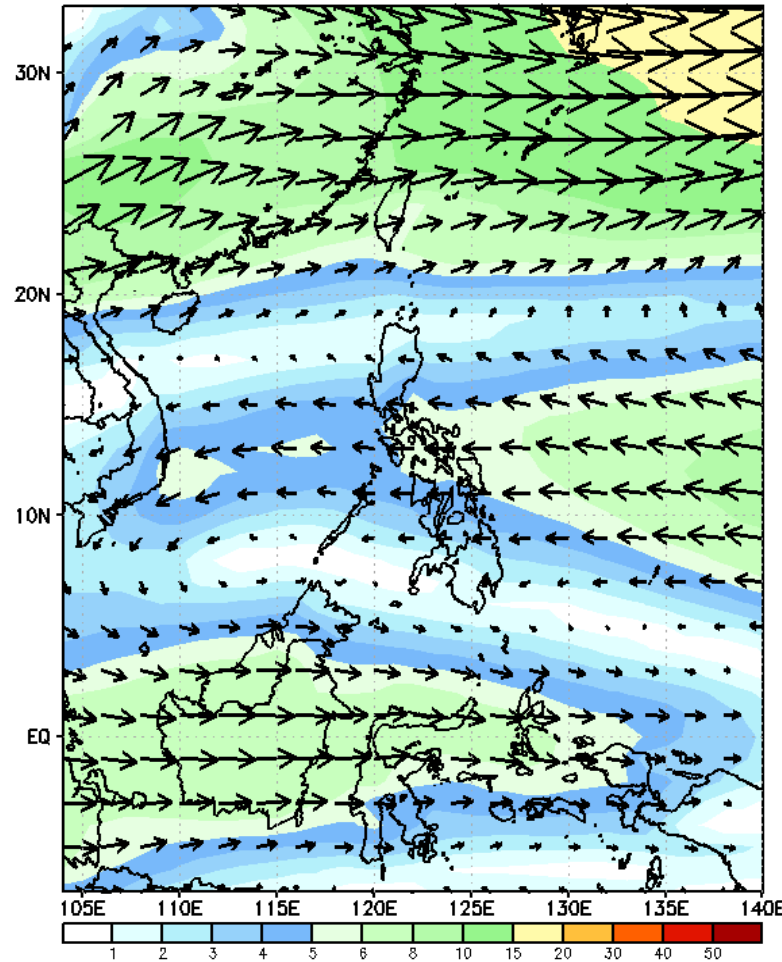
# GEFS Week-2 Wind Forecasts:

Week 2: Dec 02-08, 2024

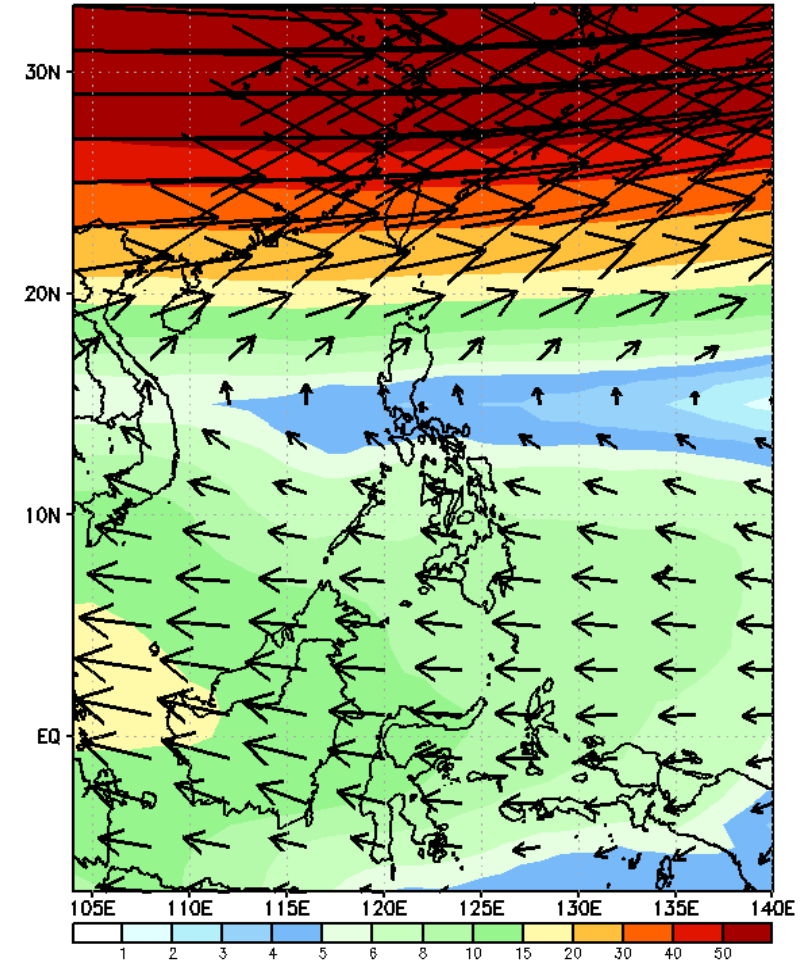
GEFS Week-2 850-hPa Wind Total  
Valid: 20241202 - 20241208



GEFS Week-2 700-hPa Wind Total  
Valid: 20241202 - 20241208

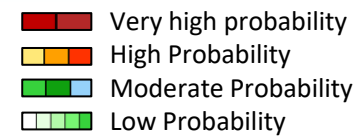


GEFS Week-2 200-hPa Wind Total  
Valid: 20241202 - 20241208



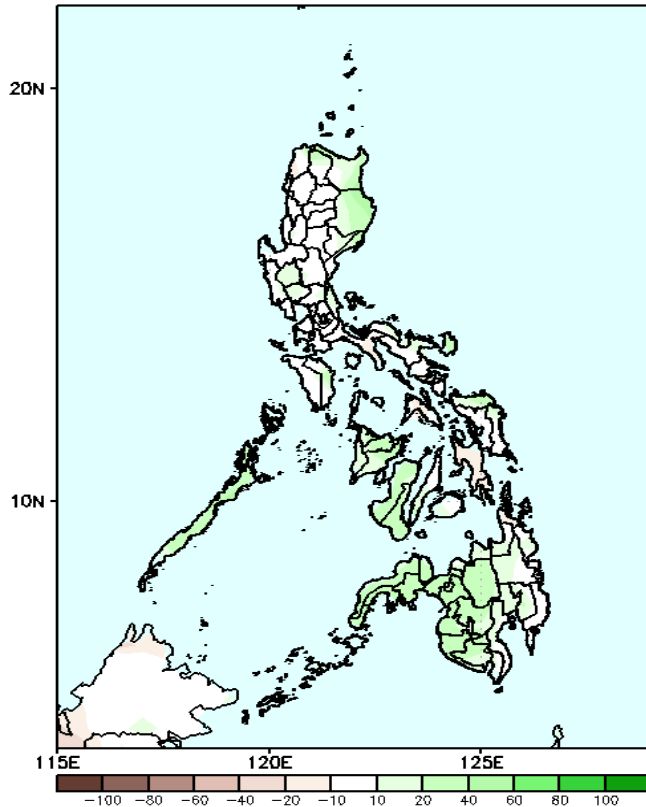
Northeast Monsoon affecting Northern Luzon, Easterlies will likely affect the rest of the country during the forecast period

# Precipitation Anomaly and Exceedance Probability > 25/50 mm

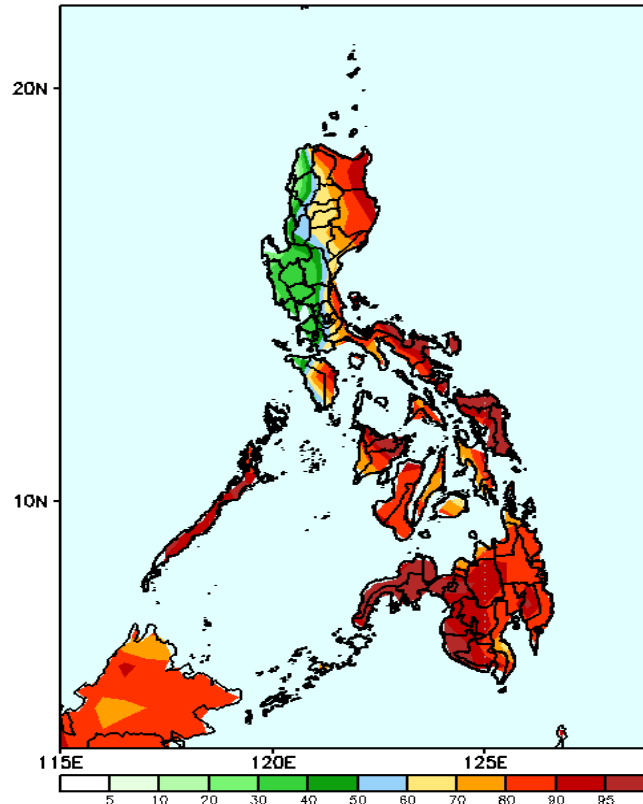


Week 2: Dec 02-08, 2024

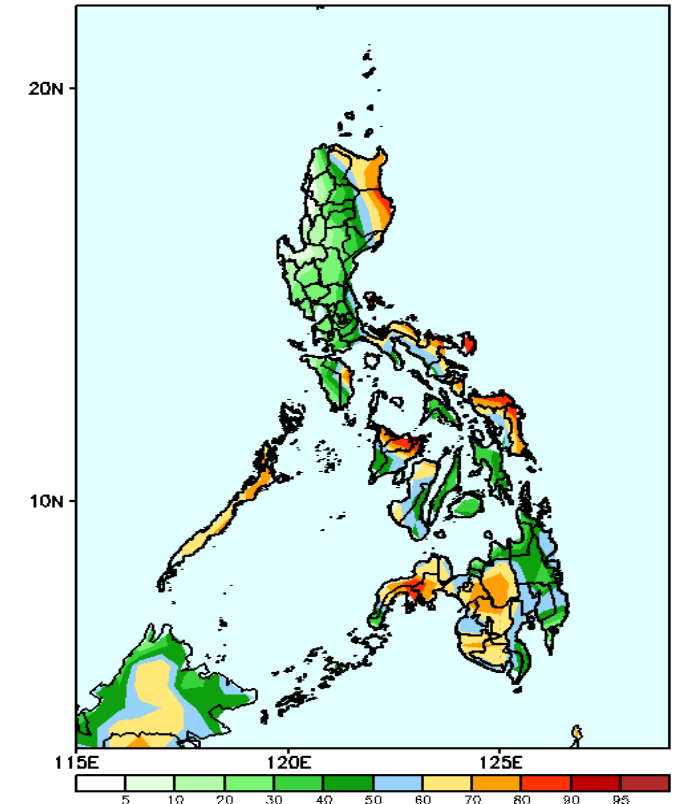
GEFS Week-2 Precip Anomaly  
Valid: 20241202 - 20241208



GEFS Week-2 Exceedance Prob. > 25mm  
Valid: 20241202 - 20241208



GEFS Week-2 Exceedance Prob. > 50mm  
Valid: 20241202 - 20241208



Increase of Rainfall of 20-80mm is most likely in Apayao, Cagayan, Isabela, Sorsogon, Palawan, northern Samar, western parts of Visayas and Mindanao, and Bukidnon.

### Probability to Exceed 25mm

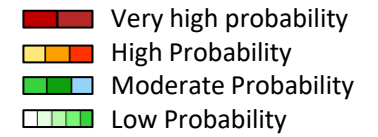
- High to very high over the eastern section of Luzon, Mindoro, Palawan, and most parts of Visayas and Mindanao;
- Moderate to high over the rest of Luzon.

### Probability to Exceed 50mm

- Moderate to high over Eastern Luzon, Oriental Mindoro, Palawan and most parts of Visayas and Mindanao;
- Low to moderate over the rest of Luzon;

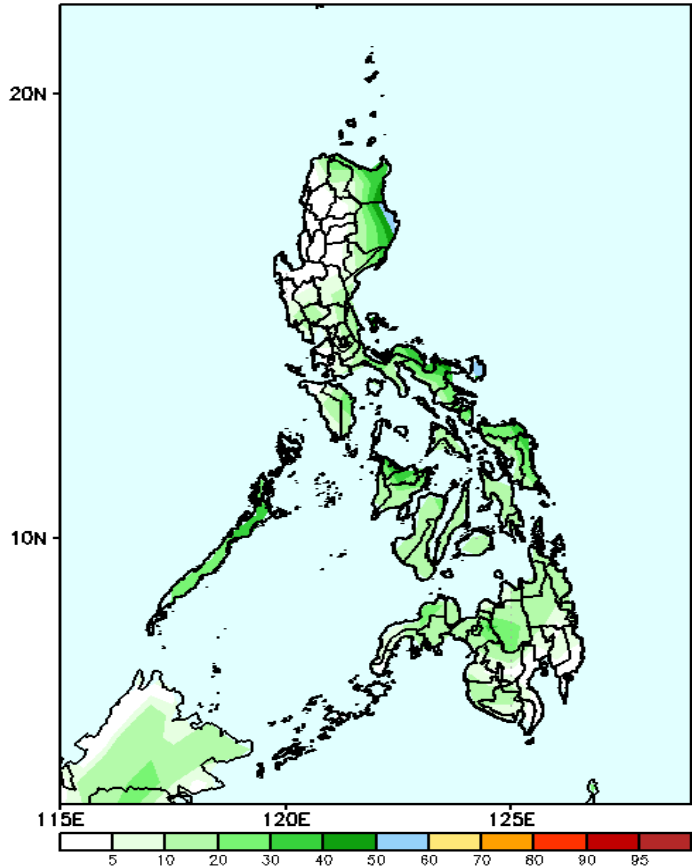


# Exceedance Probability > 100/150/200 mm



## Week 2: Dec 02-08, 2024

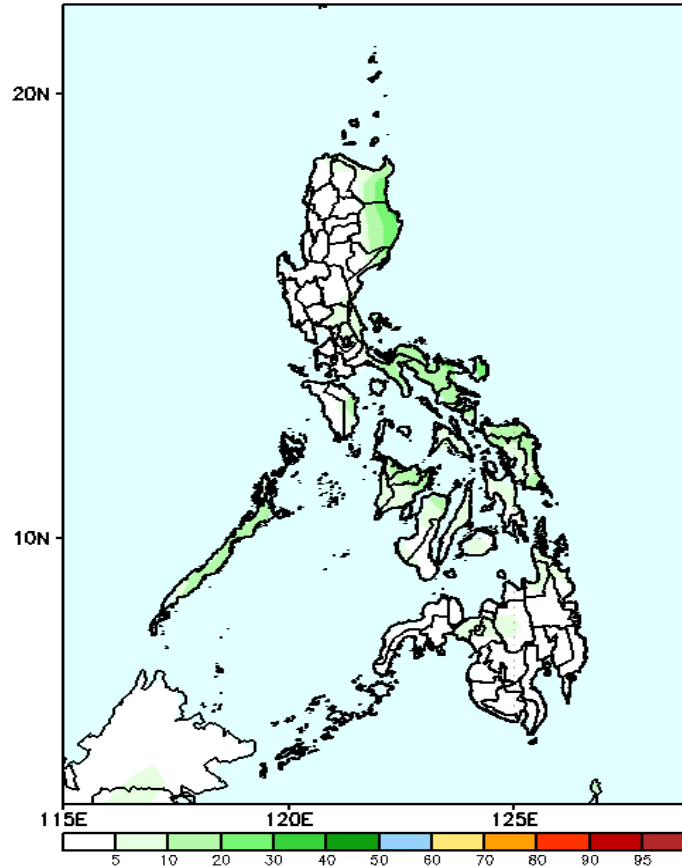
GEFS Week-2 Exceedance Prob. > 100mm  
Valid: 20241202 - 20241208



### Probability to Exceed 100mm

- Moderate over the eastern part of Isabela and Bicol Region;
- Low to moderate over the rest of Eastern Luzon and Eastern Visayas;
- Low over the rest of the country.

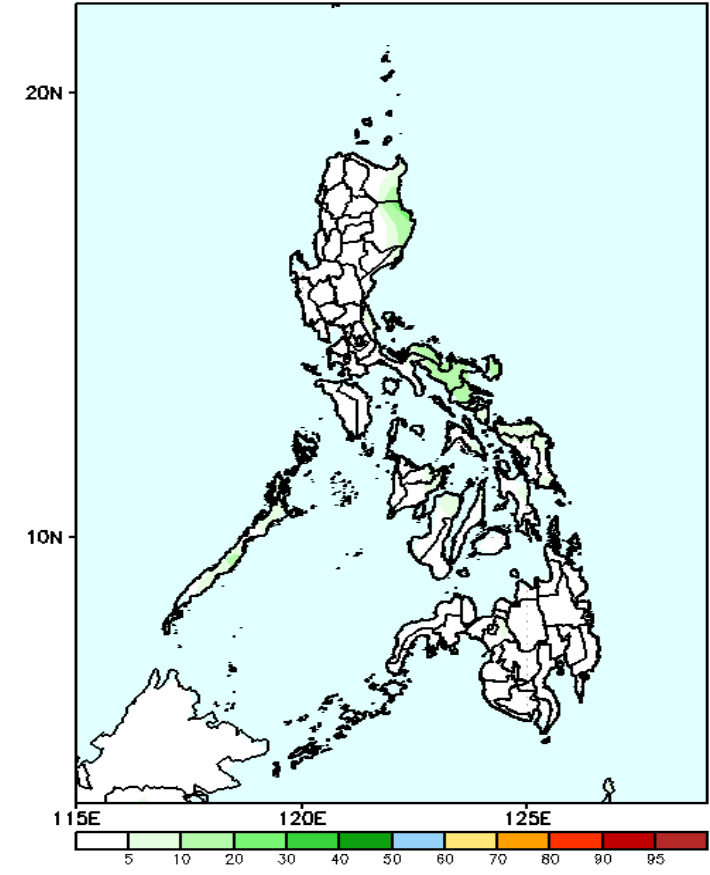
GEFS Week-2 Exceedance Prob. > 150mm  
Valid: 20241202 - 20241208



### Probability to Exceed 150mm

- Low across the country.

GEFS Week-2 Exceedance Prob. > 200mm  
Valid: 20241202 - 20241208

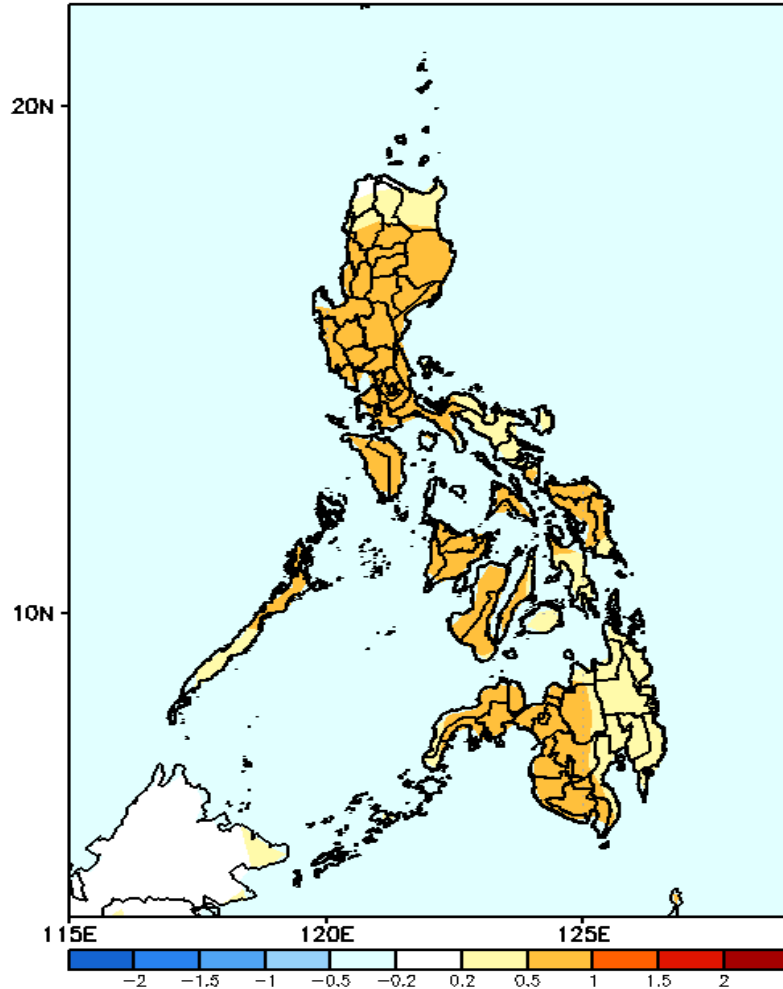


### Probability to Exceed 200mm

- Low across the country.

# GEFS Week-1 & 2 Forecasts: T2m Anomaly

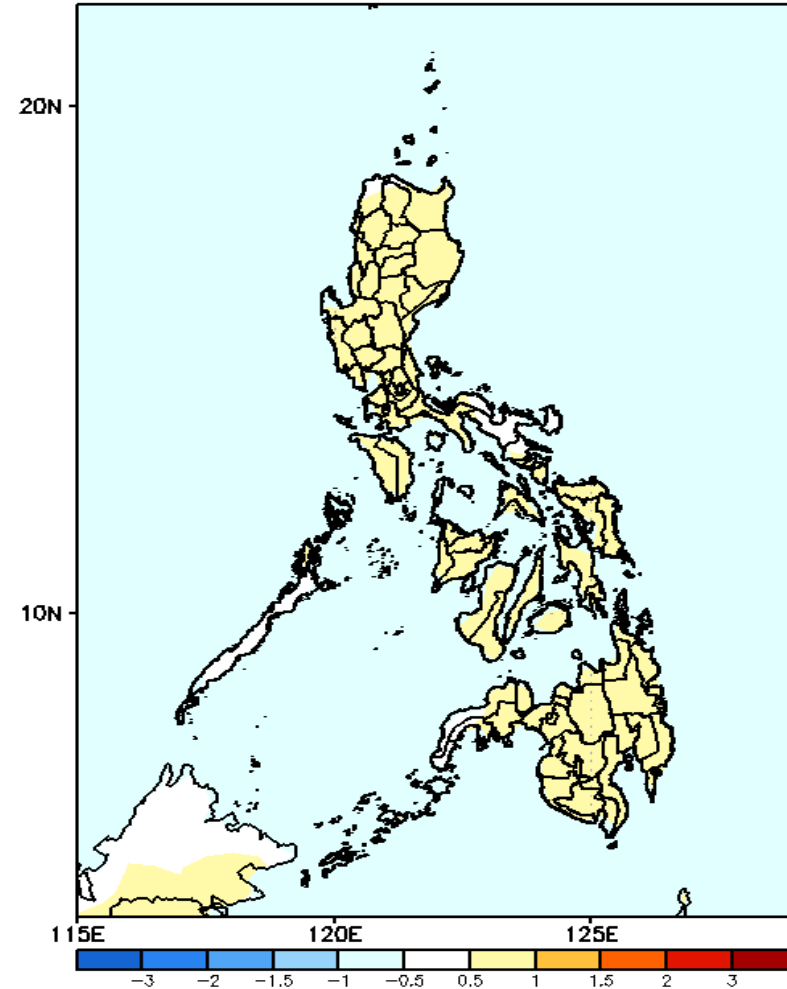
GEFS Week-1 T2m Anomaly  
Valid: 20241125 - 20241201



## 2m Temperature Week 1: Nov 25- Dec 01, 2024

Slightly warmer to warmer than average surface air temperature will likely be experienced in most parts of the country.

GEFS Week-2 T2m Anomaly  
Valid: 20241202 - 20241208



## 2m Temperature Week 2: Dec 02-08, 2024

Slightly warmer than average surface air temperature will likely be experienced in most parts of the country.

